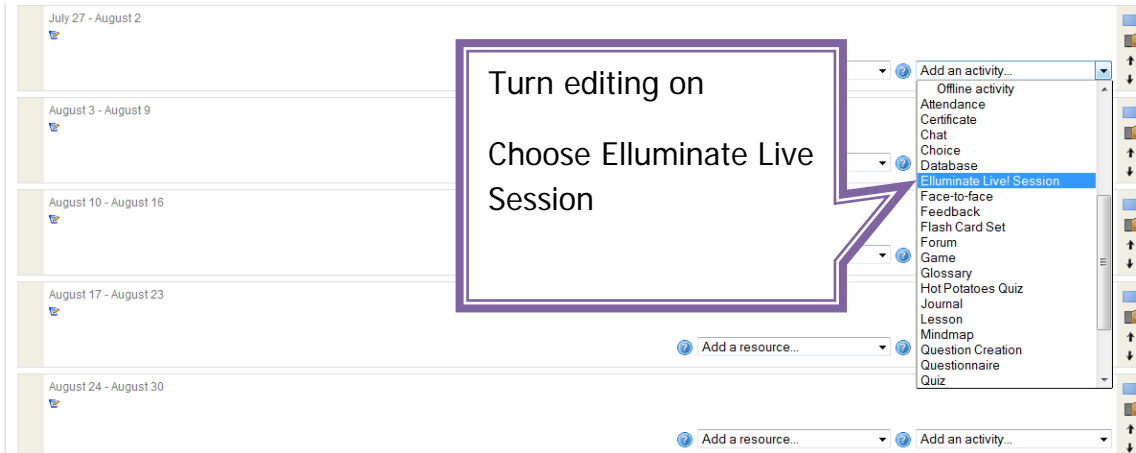


How to use the Elluminate Module in Moodle

Adding the Module



Adding a new Elluminate Live! Session

General

Title*
Session Type
Session Name
Session Name

Description

Path:

Session begins
Session ends
Session recording
Boundary time
Display boundary time
Grade attendance

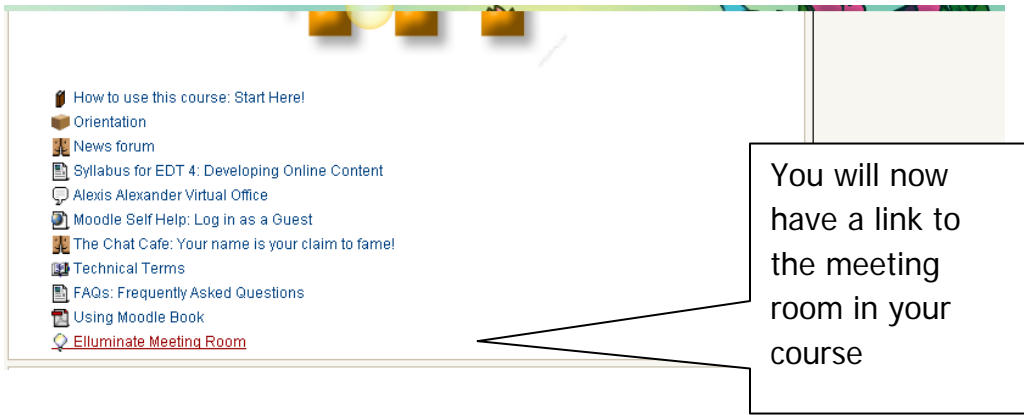
Group mode
Visible
ID number
Grade category

There are required fields in this form marked *

Annotations:

- Give your session a name (points to Title field)
- You can include a description here (points to Description field)
- This area defines the parameters of your session (points to Session begins/ends fields)
- Don't forget to save! (points to Save buttons)

How to use the Elluminate Module in Moodle



How to use this course: Start Here!
Orientation
News forum
Syllabus for EDT 4: Developing Online Content
Alexis Alexander Virtual Office
Moodle Self Help: Log in as a Guest
The Chat Cafe: Your name is your claim to fame!
Technical Terms
FAQs: Frequently Asked Questions
Using Moodle Book
[Elluminate Meeting Room](#)

You will now have a link to the meeting room in your course



Name: Elluminate Meeting Room
Description:
Session begins: Saturday, 5 February 2011, 05:00 AM
Session ends: Friday, 4 March 2011, 01:30 AM

[Edit moderators for this session](#)
[Add a preload file](#)
Recording is manually controlled

Join Session

[Verify your system is setup properly here](#)

Recording - Saturday, 29 January 2011, 10:03 AM - 20902507 KB  

Recording - Monday, 7 February 2011, 03:26 PM - 17184939 KB  

Recording - Sunday, 13 February 2011, 08:05 PM - 37040349 KB  

Recording - Monday, 28 February 2011, 02:22 PM - 13951968 KB  

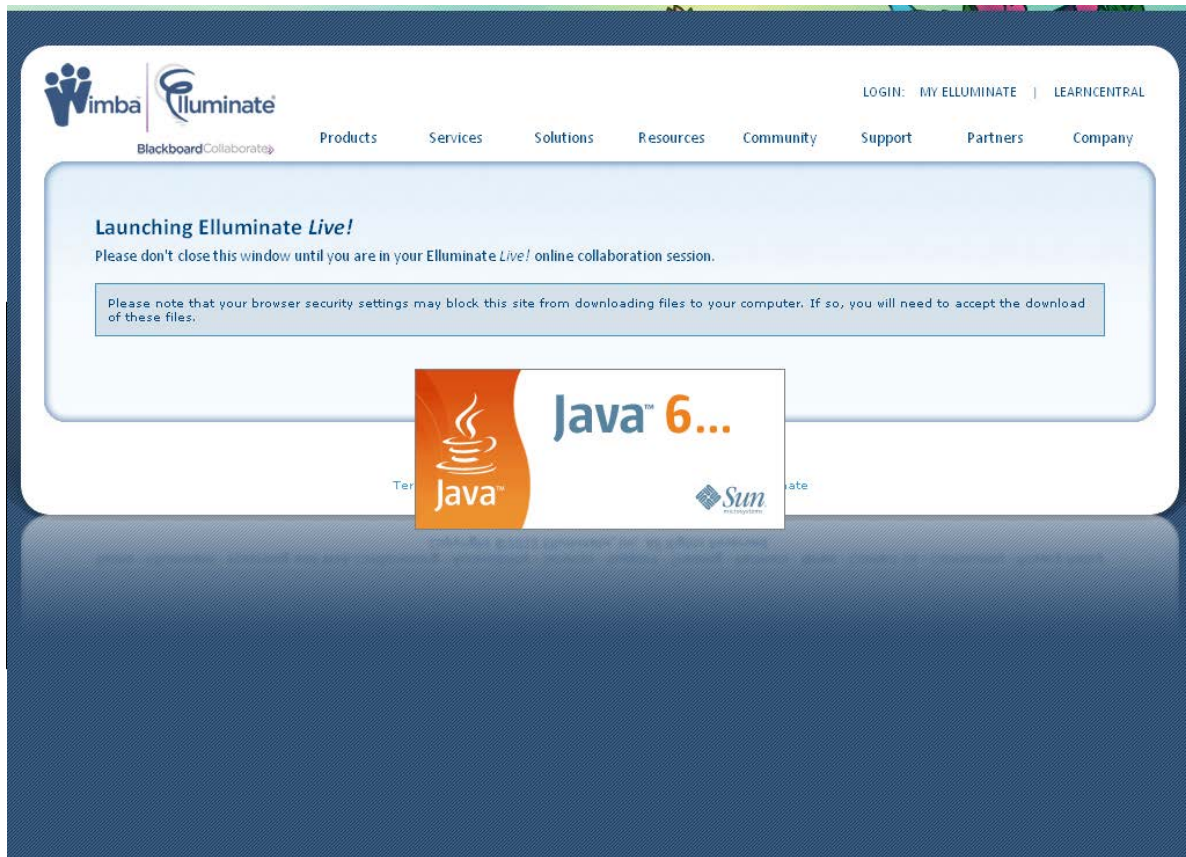
Play recording - Monday, 28 February 2011, 08:36 PM - 36656014 KB  

Clicking on the Elluminate Meeting Room link will bring you to a page like this

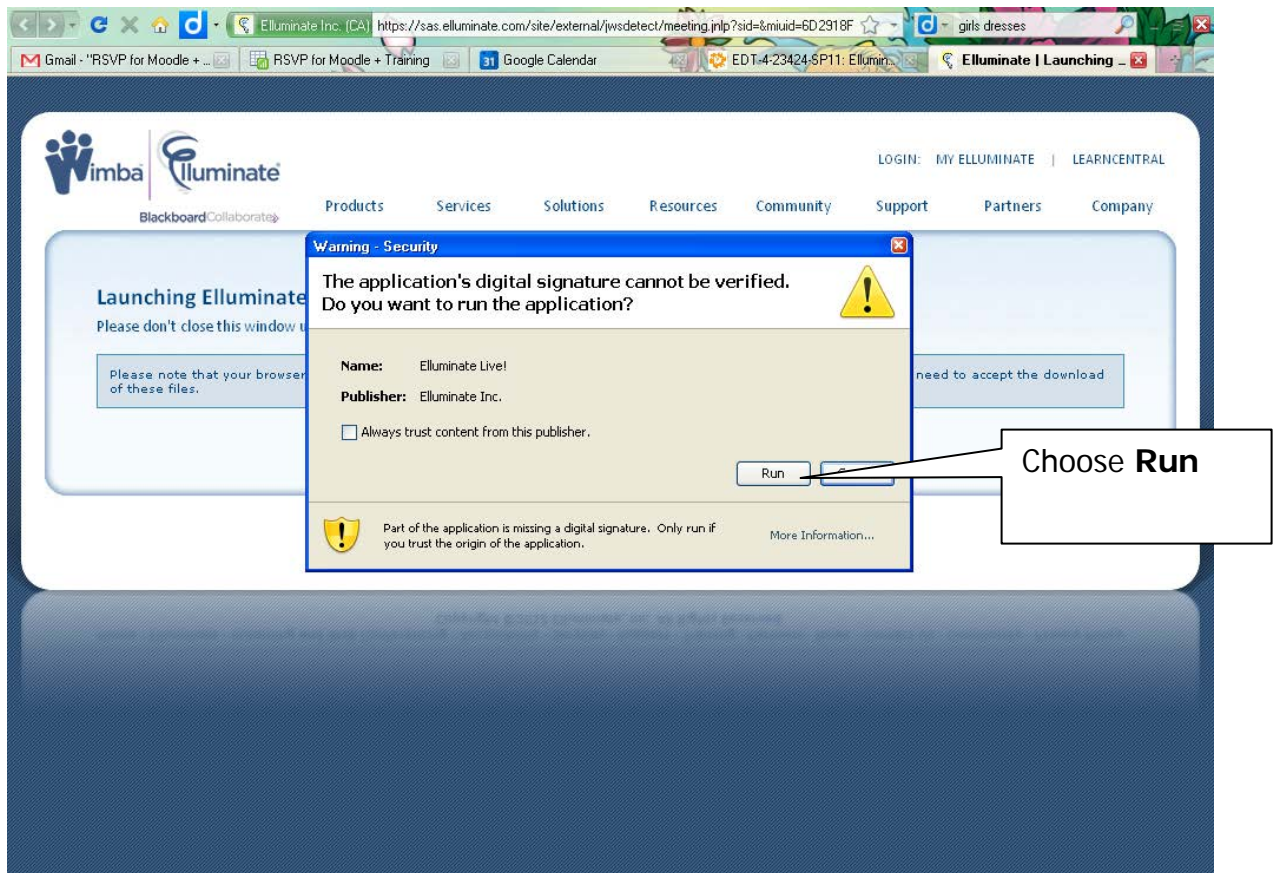
Click on **Join Session**

Moodle Docs for this page

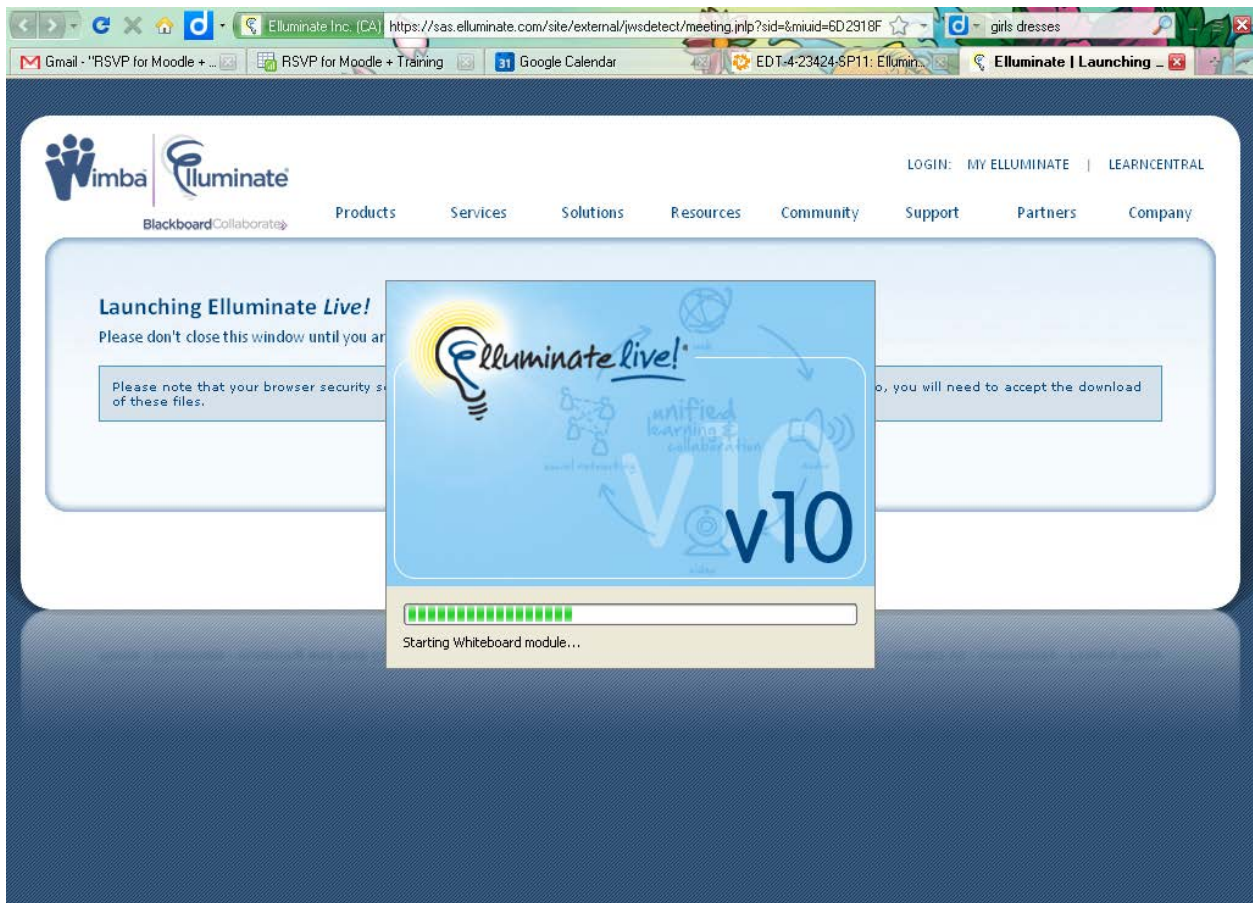
How to use the Elluminate Module in Moodle



How to use the Elluminate Module in Moodle



How to use the Elluminate Module in Moodle



You will be prompted to choose your connection type

How to use the Elluminate Module in Moodle

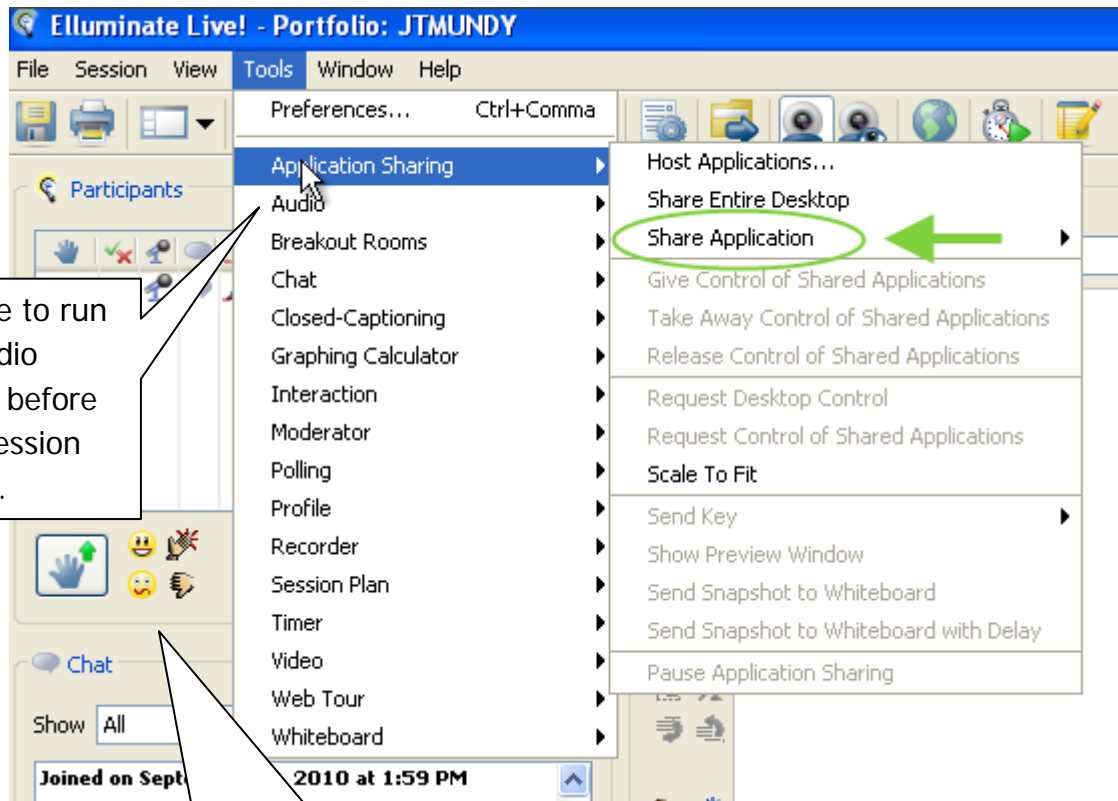
The Elluminate Live! Online Classroom Space

The screenshot shows the Elluminate Live! interface. At the top, there is a menu bar with 'File', 'Session', 'View', 'Tools', 'Window', and 'Help'. Below the menu bar is a toolbar with various icons. A callout box points to the camera icon, stating: 'This is the camera icon, you can turn on the camera on your laptop and have your live image as a part of the screen seen by the students'. On the left side, there is a 'Participants' list showing 'Alexis Alexander...' and a 'Chat' window with a message 'Joined on March 1, 2011 at 2:38 PM'. In the center, there is a 'Whiteboard - Main Room (Scaled 92%)' with a toolbar and a 'Public Screen' display. A callout box points to the whiteboard toolbar, stating: 'This is the white board. You can upload a PowerPoint file here using this icon'. At the bottom left, there is a 'Recording Reminder' dialog box with the text 'Recording not started. Start recording now?' and a 'Start' button. A callout box points to this dialog, stating: 'At any point you can record your session and also pause and resume recording. Recording your session creates an archive for future viewing.' The bottom right corner of the interface shows 'In session for 1 minute.'

How to use the Elluminate Module in Moodle

Sharing your Desktop or Applications

You can share your desktop or any application that you have on your computer in real time with your students.



Be sure to run the audio wizard before your session begins.

During the live session, students can participate by chatting, raising their hands, clicking on various emoticons or by responding to polls that you conduct during the session.